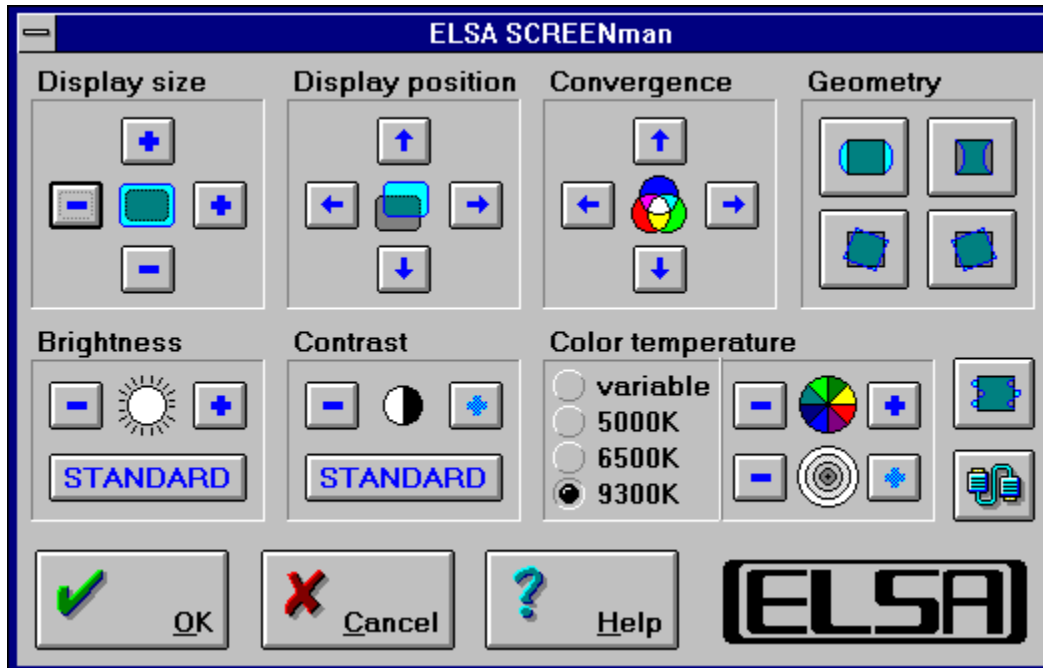
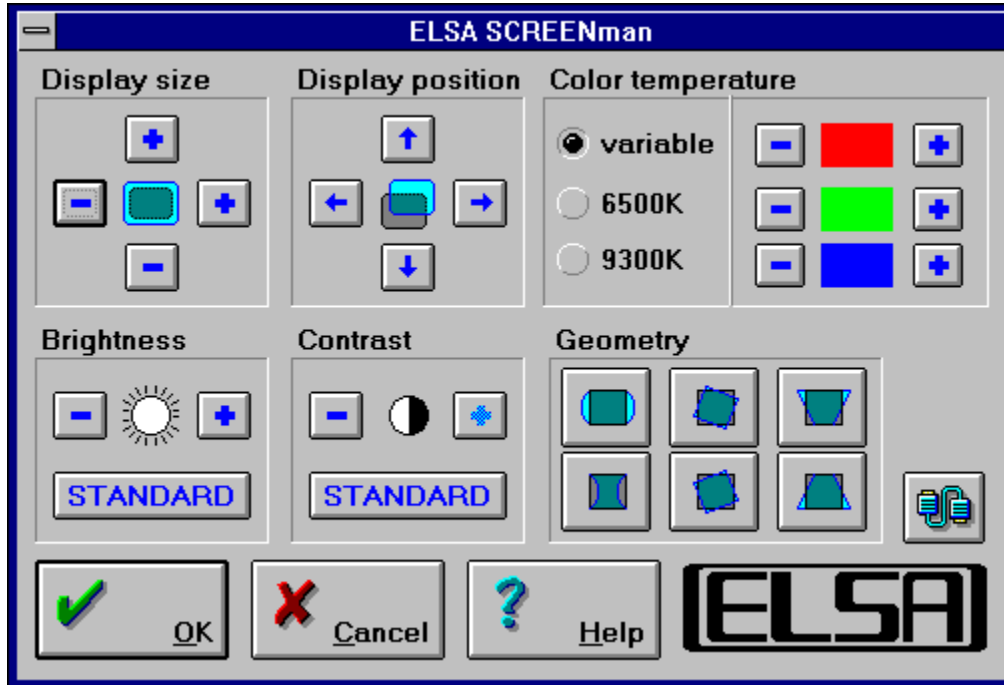


Please click the desired Help topic:



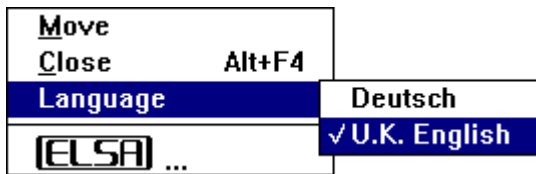
Please click the desired Help topic:



Clicking the Cancel button leaves *SCREENman* and cancels any changes.

Clicking the HELP button starts the context-sensitive Help function.

Language selection



In the system menu you can change the dialog language of this tool.
All available languages are listed here.

Display Size

Here you can change the size of the display size (width and height).

If no further increasing or decreasing is possible, the corresponding control button is disabled.

Display Position

Here you can move the position of the display in X and Y direction.

If no further movement is possible in one of the directions, the corresponding control button is disabled.

Convergence

Here you can adjust the display convergence by correcting the Red deflection.

If a correction in one of the directions is not possible, the corresponding control button is disabled.

Display Geometry

These two control buttons can be used to correct the display geometry if the display is dented to the outside or inside. If a correction in one of the directions is not possible, the corresponding control button is disabled.

Display Rotation

Use these control buttons to rotate the display clockwise or counterclockwise. If no further rotation is possible in one of the directions, the corresponding control button is disabled.

Display Trapezoid

These two control buttons can be used to correct the display trapezoid. If a correction in one of the directions is not possible, the corresponding control button is disabled.

Brightness

Here you can adjust the bightness of the monitor display.
The standard setting is half of the maximum possible brightness value.

Contrast

Here you can adjust the contrast of the monitor display.
The standard setting is the maximum possible contrast value.

Hue

Here you can adjust the hue of the monitor display.

An easy way to do this is to select the maximum possible saturation value.

Saturation

Here you can adjust the saturation of the monitor display.
The color temperature depends on the values of hue and saturation.

RGB Saturation

Here you can adjust the red, green and blue saturation of the monitor display.
The color temperature depends on the values of all three color saturations.

Color Temperature

Here you can adjust the color temperature of the monitor.
Color display is softest with low temperature and harder with high.

If you are able to select 'variable', color temperature is adjustable using hue and saturation.

Remark to monitor GDM-20H110: Variable color temperature is selectable only by the control key set of the monitor.

Degauss

This causes the monitor to be demagnetized.

Magnetization is a common reason for a distorted color display.

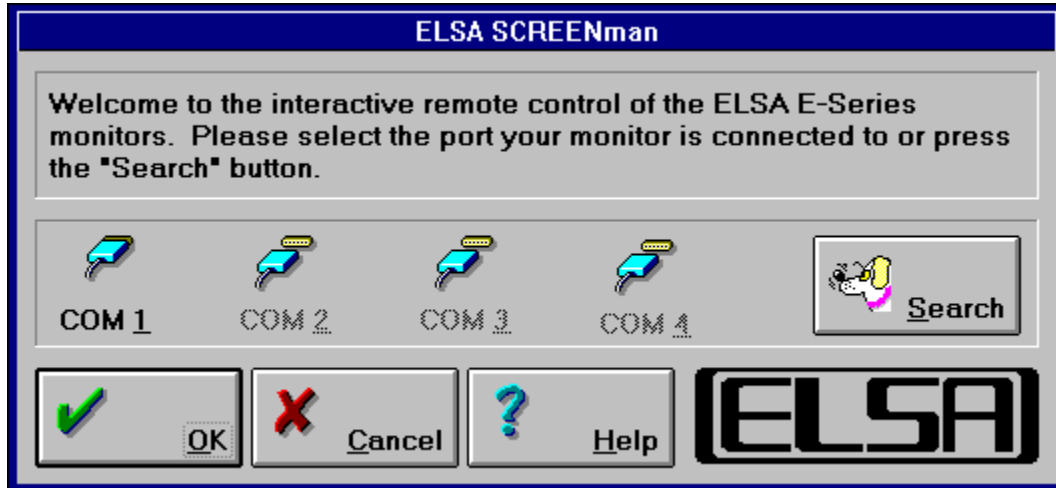
Hide control dialog

You can hide the control dialog by clicking the ELSA logo. Again clicking the left mouse button will pop up the control dialog.

Reset

You are able to restore the factory default settings of some monitors by clicking the ELSA logo while you are holding down the CONTROL and SHIFT key.

Please click the desired help topic:



Interface

This option is used to select the serial interface your monitor is connected to.

Clicking the OK button leaves th dialog.
SCREENman tries to connect the monitor via your selected port.

Interface Detection

With this option you can make SCREENman search for the interface your monitor is connected to.

Attention: This function may temporarily affect the behavior of other devices connected to serial interfaces.

Command line parameter

There is the possibility to activate SCREENman with command line parameters:

<code>/KEYOFF</code>	Disable control key set of the monitor.
<code>/KEYON</code>	Enable control key set of the monitor.

Using this parameter no user interface is shown and the program terminates automatically. On errors the user will get an error description.



SCREENman

Interactive Monitor Control

Version 1.5

Copyright © 1993-95 ELSA GmbH, Aachen (Germany)
